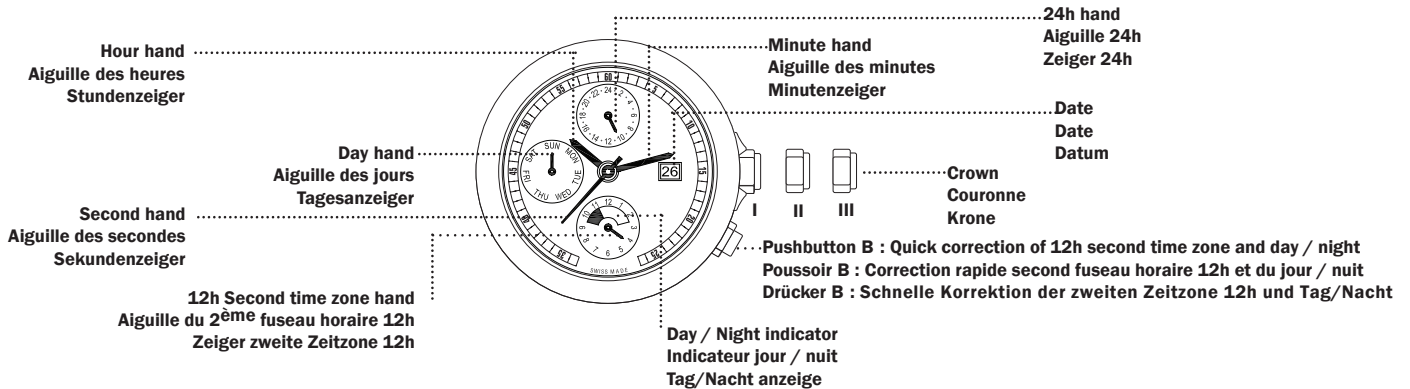


9230M1 (0005)

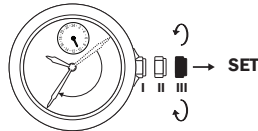
PRESENTATION – PRÉSENTATION – ANSICHT



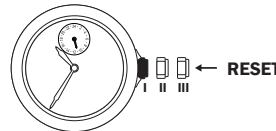
SETTING THE TIME
HOUR AND MINUTE
12h AND 24h

REGLAGE DE L'HEURE
ET MINUTE
12h ET 24h

EINSTELLEN DER ZEITANZEIGE
STUNDEN UND MINUTEN
12h und 24h



0.1 Pull the stem in pos. III
0.2 Turn the crown until the desired hour

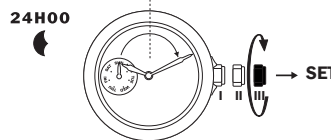


0.3 Push the stem in pos. I

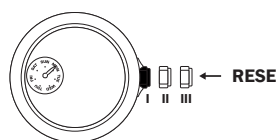
DAY SETTING

CORRECTION DU JOUR

EINSTELLEN DES TAGES



1.1 Pull the stem in pos. III
1.2 Turn the crown in the clockwise direction until the desired day

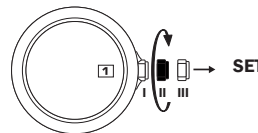


1.3 Push the stem in pos. I

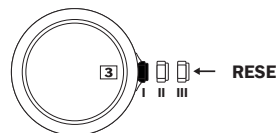
QUICK DATE CORRECTION
CAUTION: NEVER CORRECT DATE
BETWEEN 9 PM AND 0.30 AM.

CORRECTION RAPIDE DE LA DATE
ATTENTION: LA CORRECTION
DE LA DATE NE PEUT PAS
SE FAIRE ENTRE 21H00 ET 0H30.

SCHNELLE KORREKTION DES DATUMS
ACHTUNG: DATUM NICHT
ZWISCHEN 21 UHR UND 0 UHR
30 EINSTELLEN.



2.1 Pull the stem in pos. II
2.2 Turn the crown in the clockwise direction until the desired date

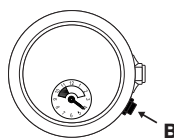


1.3 Push the stem in pos. I

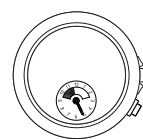
SET THE SECOND TIME ZONE
AND DAY AND NIGHT

CHANGEMENT 2^{ème} FUSEAU HORAIRE
ET JOUR / NUIT

ÄNDERUNG DER ZWEITEN ZEITZONE
UND TAG/NACHT

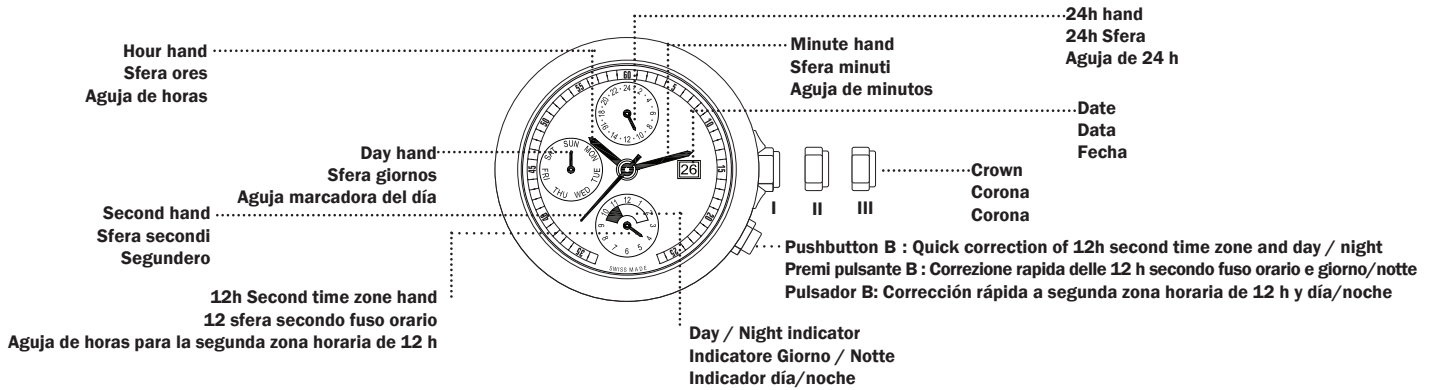


3.1 Push the pusher B to adjust the desired second time



3.2

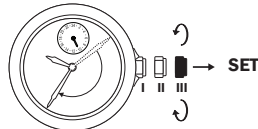
PRESENTATION – PRESENTAZIONE – PRESENTACION



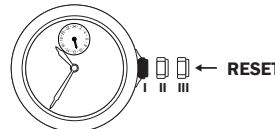
SETTING THE TIME
HOUR AND MINUTE
12h and 24h

SISTEMA IL TEMPO
ORE E MINUTI
12h e 24h

AJUSTAR LA HORA
HORAS Y MINUTOS
12h y 24h



0.1 Pull the stem in pos. III
0.2 Turn the crown until the desired hour

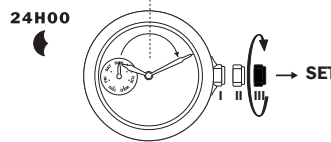


0.3 Push the stem in pos. I

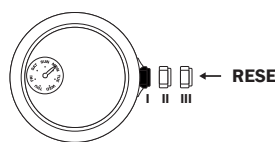
DAY SETTING

SISTEMA IL GIORNO

AJUSTAR EL DÍA



1.1 Pull the stem in pos. III
1.2 Turn the crown in the clockwise direction until the desired day

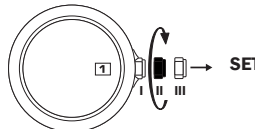


1.3 Push the stem in pos. I

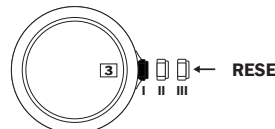
QUICK DATE CORRECTION
CAUTION: NEVER CORRECT DATE
BETWEEN 9 PM AND 0.30 AM.

CORREZIONE RAPIDA DELLA DATA
Per precauzione: NON CORREGGERE MAI LA DATA
TRA 9PM E 0:30AM

CORRECCIÓN RÁPIDA DE LA FECHA
PRECAUCIÓN: NO CORRIJA NUNCA LA FECHA
ENTRE LAS 21:00 PM Y LAS 0:30 AM



2.1 Pull the stem in pos. II
2.2 Turn the crown in the clockwise direction until the desired date

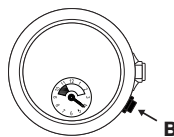


1.3 Push the stem in pos. I

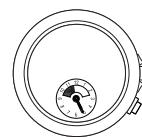
SET THE SECOND TIME ZONE
AND DAY AND NIGHT

SISTEMA IL SECONDO FUSO ORARIO
E IL GIORNO E LA NOTTE

AJUSTAR LA SEGUNDA ZONA HORARIA
Y EL DÍA Y LA NOCHE



3.1 Push the pusher B to adjust the desired second time



3.2