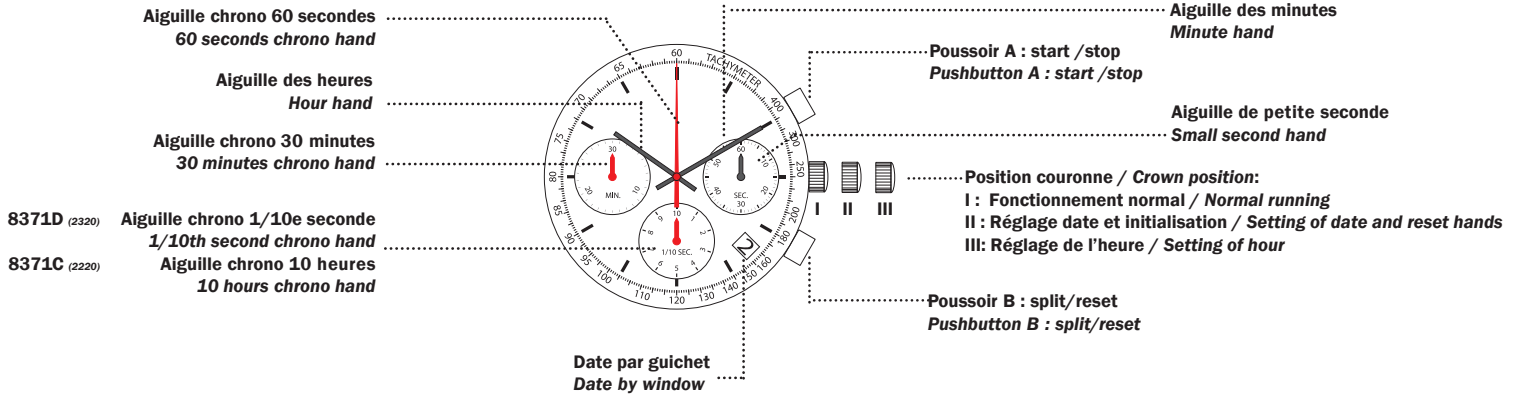


8371 B (2010) / **C** (2220) / **D** (2320)

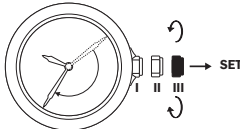


PRESENTATION - PRÉSENTATION



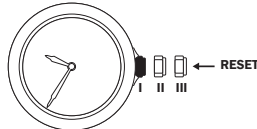
RÉGLAGES - SETTINGS

**SETTING THE TIME
HOUR AND MINUTE**



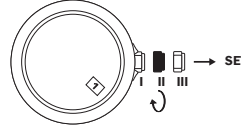
- 1.1 Pull the stem in pos. III
- 1.2 Turn the crown until the desired hour

**REGLAGE DE
L'HEURE ET MINUTE**



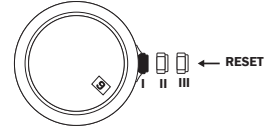
- 1.3 Push the stem in pos. I

**QUICK SETTING THE DATE
CAUTION: NEVER CORRECT DATE
BETWEEN 9 PM AND 0.30 AM.**



- 2.1 Pull the stem in pos. II
- 2.2 Turn the crown in the clockwise direction until the desired date

**CORRECTION RAPIDE DE LA DATE
ATTENTION: LA CORRECTION
DE LA DATE NE PEUT PAS SE
FAIRE ENTRE 21H00 ET 0H30.**



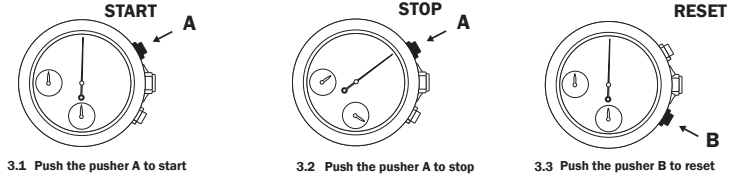
- 2.2 Push the stem in pos. I

FUNCTIONS - FONCTIONS

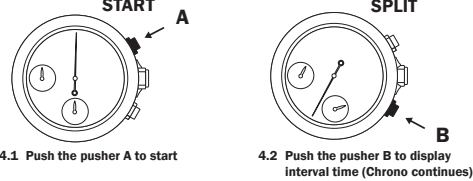
CHRONOGRAPH: MEASURING CUMULATIVE TIMES

AFTER 2 HOURS (8371B (2010) or 8371D (2320)) OR AFTER 10 HOURS (8371C (2220)) OF CONTINUOUS RUNNING, THE CHRONO STOPS AND RESETS AUTOMATICALLY TO SAVE THE BATTERY
APRÈS 2 HEURES (8371B (2010) ou 8371D (2320)) OU APRÈS 10 HEURES (8371C (2220)) DE MARCHÉ, LE CHRONO S'ARRÊTE ET SE REMET À ZÉRO AUTOMATIQUÉMENT AFIN D'ÉCONOMISER LA PILE.

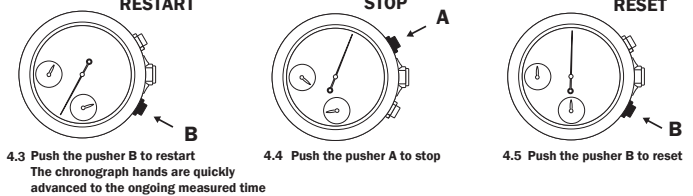
CHRONOMETRE: MESURE DE TEMPS CUMULÉS



CHRONOGRAPH: MEASURING SPLIT TIMES



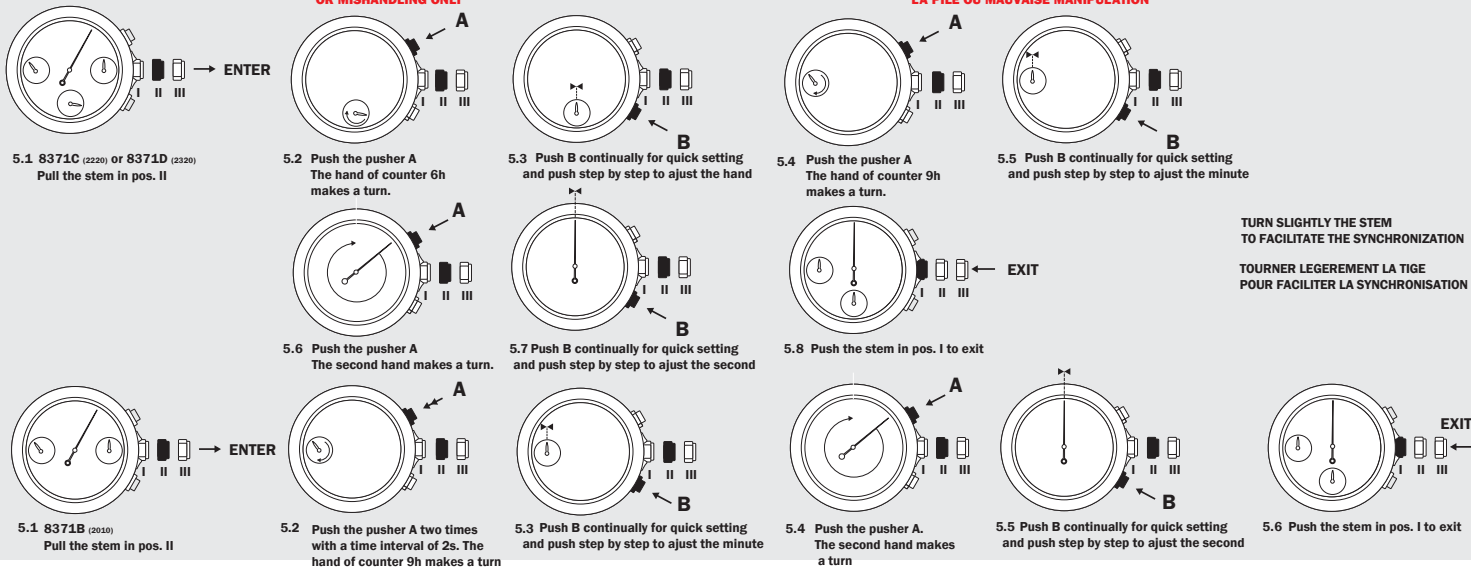
CHRONOMETRE: MESURE DE TEMPS INTERMÉDIAIRES



CALIBRATION - INITIALISATION

**TO RESET CHRONOGRAPH,
MINUTE AND SECOND CHRONOGRAPH
AFTER BATTERY EXCHANGE
OR MISHANDLING ONLY**

**INITIALISATION CHRONOMETRE,
MINUTE ET SECONDE CHRONOMETRE
SEULEMENT APRÈS CHANGEMENT DE
LA PILE OU MAUVAISE MANIPULATION**



TURN SLIGHTLY THE STEM TO FACILITATE THE SYNCHRONIZATION
TOURNER LÉGEREMENT LA TIGE POUR FACILITER LA SYNCHRONISATION

INFO