

431 B



C



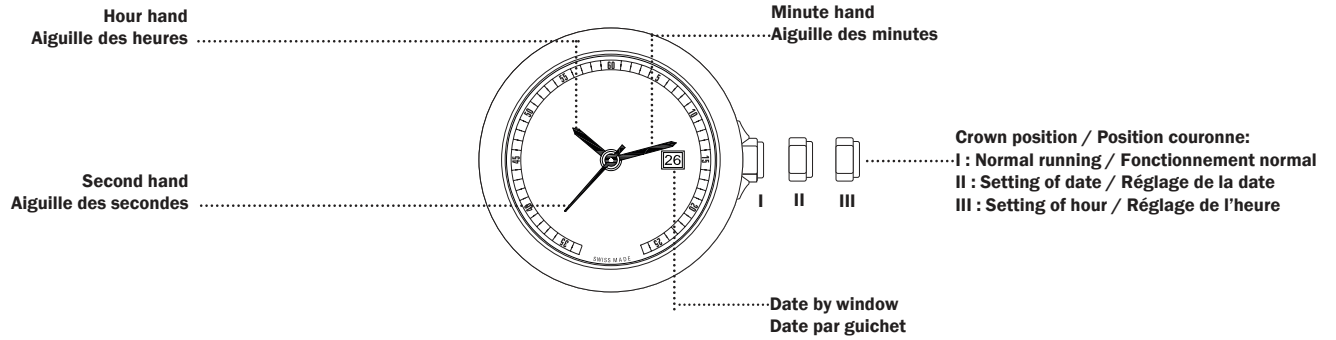
E



F

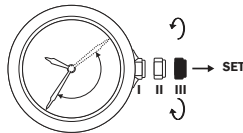


PRESENTATION – PRÉSENTATION



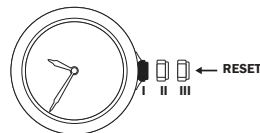
RÉGLAGES - SETTINGS

**SETTING THE TIME
HOUR AND MINUTE**



1.1 Pull the stem in pos. III
1.2 Turn the crown until the desired hour
(remember the 24-hour-cycle)

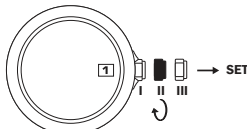
**REGLAGE DE L'HEURE
ET MINUTE**



1.3 Push the stem in pos. I

QUICK DATE CORRECTION

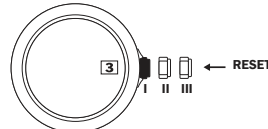
**CAUTION: NEVER CORRECT DATE
BETWEEN 9 PM AND 0.30 AM.**



2.1 Pull the stem in pos. II
2.2 Turn the crown in the clockwise
direction until the desired date

CORRECTION RAPIDE DE LA DATE

**ATTENTION: LA CORRECTION DE LA DATE NE PEUT PAS
SE FAIRE ENTRE 21H00 ET 0H30.**

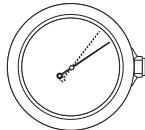


2.3 Push the stem in pos. I

FUNCTIONS – FONCTIONS

**END OF LIFE
INDICATION**

Only for 3 hands versions



The second hand jumping 4 successive steps every 4 seconds.

L'aiguille seconde effectue 4 pas successifs toutes les 4 secondes.

**INDICATION DE
BATTERIE FAIBLE**

Seulement pour les versions 3 aiguilles

INFO