

430 **B**



**C**



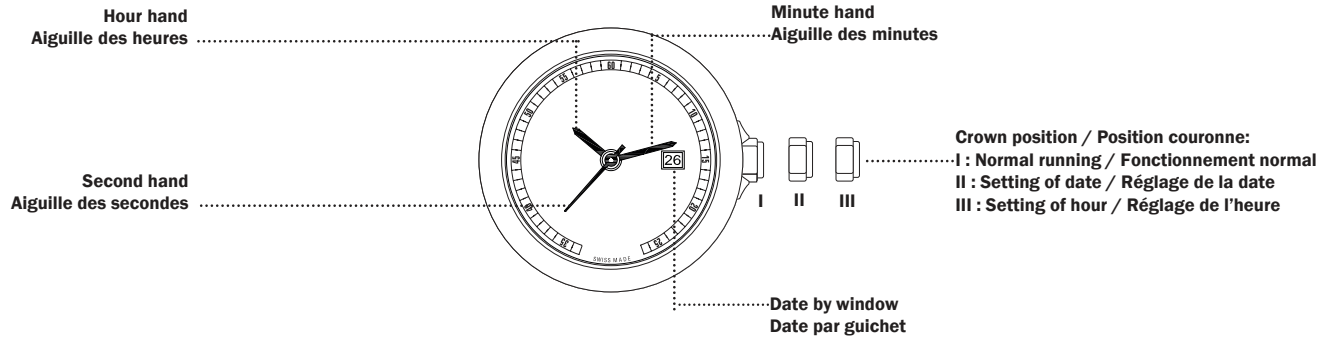
**E**



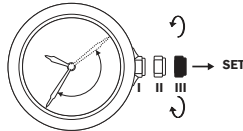
**F**



PRESENTATION – PRÉSENTATION

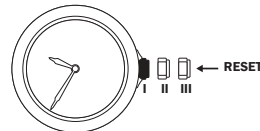


SETTING THE TIME  
HOUR AND MINUTE



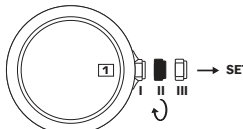
- 1.1 Pull the stem in pos. III
- 1.2 Turn the crown until the desired hour (remember the 24-hour-cycle)

REGLAGE DE L'HEURE  
ET MINUTE



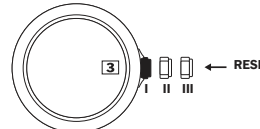
- 1.3 Push the stem in pos. I

QUICK DATE CORRECTION  
CAUTION: NEVER CORRECT DATE  
BETWEEN 9 PM AND 0.30 AM.



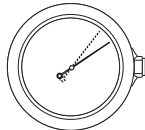
- 2.1 Pull the stem in pos. II
- 2.2 Turn the crown in the clockwise direction until the desired date

CORRECTION RAPIDE DE LA DATE  
ATTENTION: LA CORRECTION DE LA DATE NE PEUT PAS  
SE FAIRE ENTRE 21H00 ET 0H30.



- 2.3 Push the stem in pos. I

END OF LIFE  
INDICATION  
Only for 3 hands versions



The second hand jumping 4 successive steps every 4 seconds.

L'aiguille seconde effectue 4 pas successifs toutes les 4 secondes.

INDICATION DE  
BATTERIE FAIBLE  
Seulement pour les versions 3 aiguilles